

SCOPIA Connector for IBM Lotus Sametime Version 7.0



NOTICE

© 2005-2009 RADVISION Ltd. All intellectual property rights in this publication are owned by RADVISION Ltd and are protected by United States copyright laws, other applicable copyright laws and international treaty provisions. RADVISION Ltd retains all rights not expressly granted.

This publication is RADVISION confidential. No part of this publication may be reproduced in any form whatsoever or used to make any derivative work without prior written approval by RADVISION Ltd.

No representation of warranties for fitness for any purpose other than what is specifically mentioned in this guide is made either by RADVISION Ltd or its agents.

RADVISION Ltd reserves the right to revise this publication and make changes without obligation to notify any person of such revisions or changes. RADVISION Ltd may make improvements or changes in the product(s) and/or the program(s) described in this documentation at any time.

If there is any software on removable media described in this publication, it is furnished under a license agreement included with the product as a separate document. If you are unable to locate a copy, please contact RADVISION Ltd and a copy will be provided to you.

Unless otherwise indicated, RADVISION registered trademarks are registered in the United States and other territories. All registered trademarks recognized.

Beta

For further information contact RADVISION or your local distributor or reseller.

SCOPIA Connector version 7.0, June 2009

Publication 4

<http://www.radvision.com>

CONTENTS

About This Manual

How to Use This Manual	v
Feedback	vi

1 *Installing the SCOPIA Connector Plug-in for Lotus Sametime*

About Update Sites	1
Installing the SCOPIA Connector Update Site from the CD-ROM	2
Installing the SCOPIA Connector from an Update Site	3
How to Automatically Deploy the SCOPIA Connector	3
Manually Installing the SCOPIA Connector from an Update Site	5
Preventing Manual Downloading	6
Installing the SCOPIA Connector without an HTTP Server	7
About Distribution Methods for the SCOPIA Connector	8

2 *Integrating SCOPIA Connector for Lotus Sametime Web Conferencing into the Sametime Deployment*

Planning to Deploy IBM Lotus Sametime Web Conferencing with SCOPIA Connector Deployment	9
Simple Sametime Deployments	10
Multiple Sametime Community Hubs Deployments	11
Installing the Sametime Connector on the SCOPIA Desktop Server	13
Preparing the Sametime Servers	13
Enabling Community Services Connectivity	13

Installing the Meeting Room Client Javascript Extension	14
Configuring the Sametime Settings on the SCOPIA Desktop Server	14

ABOUT THIS MANUAL

The [SCOPIA Connector for IBM Lotus Sametime Installation Guide](#) provides information for administrators about SCOPIA Connector deployment, and installation in the IBM Lotus Sametime and IBM Lotus Sametime Web Conferencing environment.

Note The SCOPIA Connector plug-in works with the following IBM product versions:

- Sametime 7.5
- Sametime 7.5.1
- Sametime 7.5.1 CF1
- Sametime 8.0, 8.0.1, and 8.0.2
- Lotus Notes 8.0

This manual refers to options available in Sametime 8.0.

Configuration options may vary according to the product version you are using.

HOW TO USE THIS MANUAL

This manual provides information about deploying both SCOPIA Connector for Lotus Sametime and for SCOPIA Connector for Lotus Sametime Web Conferencing:

- [Chapter 1, Installing the SCOPIA Connector Plug-in for Lotus Sametime](#) on page 1
- [Chapter 2, Integrating SCOPIA Connector for Lotus Sametime Web Conferencing into the Sametime Deployment](#) on page 9

FEEDBACK

The team at RADVISION constantly endeavors to provide accurate and informative documentation. If you have comments or suggestions regarding improvements to future publications, we would value your feedback.

Please send your comments to doc_comments@radvision.com.

We thank you for your contribution.

1

INSTALLING THE SCOPIA CONNECTOR PLUG-IN FOR LOTUS SAMETIME

This section describes how administrators can automatically deploy the SCOPIA Connector plug-in throughout a network, and how end users can manually install the plug-in on a Sametime Connect client.

- [About Update Sites](#) on page 1
- [Installing the SCOPIA Connector Update Site from the CD-ROM](#) on page 2
- [Installing the SCOPIA Connector from an Update Site](#) on page 3
- [About Distribution Methods for the SCOPIA Connector](#) on page 8

ABOUT UPDATE SITES

An update site is a specific directory layout with an XML file that specifies all the available plug-ins. The method of how the update site is presented to the client can vary (for example, as a web site or via the local file system).

If SCOPIA Desktop is detected when installing SCOPIA Connector, an Eclipse update site is created for you in the SCOPIA Desktop installation directory at `<installdir>/Tomcat/webapps/ROOT/sametime`. You can use the update site at this location, or you can copy the files from the update site to a location of your choice.

We recommend using the installer to create the update site. This is usually set up on the same server as SCOPIA Desktop.

If you already have plug-ins that you automatically push via an update site, you need to merge the SCOPIA Connector site.xml file with the existing site.xml file, and copy the contents of the SCOPIA Connector features and plug-ins folders into the existing corresponding folders.

INSTALLING THE SCOPIA CONNECTOR UPDATE SITE FROM THE CD-ROM



Install the SCOPIA Connector update site from the SCOPIA Desktop CD-ROM.

Procedure

- 1 Insert the CD-ROM.
- 2 Wait for the autorun menu screen to display.
- 3 Click **SCOPIA Connector for IBM Lotus Sametime**.
- 4 Select **Install Update Site**.
- 5 Click the setup.exe file and follow the on-screen instructions.
The **Choose Installation Location** screen detects if SCOPIA Desktop is installed.
- 6 If SCOPIA Desktop is detected, the installer attempts to create an update site at
`<installdir>/Tomcat/webapps/ROOT/sametime`
The default update site URL is `http://<server>/sametime`.
Where <server> stands for either the IP address or FQDN of the server on which you install the SCOPIA Connector.
- 7 Alternatively, you can instruct the installer to create an update site at a different location.
These necessary files must either be placed under a Sametime update site or should be distributed manually.

- 8 If SCOPIA Desktop is not detected, define the location at which you want the installer to place the files needed for an update site.

By default, the installer places the files at

```
\Program Files\Radvision\SCOPIA Connector for IBM  
Lotus Sametime
```

You must either place the files needed for an update site under a Sametime update site, or distribute them manually.

INSTALLING THE SCOPIA CONNECTOR FROM AN UPDATE SITE

HOW TO AUTOMATICALLY DEPLOY THE SCOPIA CONNECTOR

INSTALLING THE SCOPIA CONNECTOR VIA THE COMMUNITY CLIENT DOCUMENT (FOR ADMINISTRATORS)



Procedure

- [How to Automatically Deploy the SCOPIA Connector](#) on page 3
- [Manually Installing the SCOPIA Connector from an Update Site](#) on page 5
- [Installing the SCOPIA Connector via the Community Client Document \(for Administrators\)](#) on page 3
- [Installing the Plug-in via the preferences.ini File \(for End Users\)](#) on page 4

This section describes how you can automatically deploy the SCOPIA Connector plug-in via the Sametime server Community Client Document.

- 1 Create an update site (see [Installing the SCOPIA Connector from an Update Site](#) for an explanation of update sites).
- 2 Open the stconfig.nsf file on the Sametime server.
- 3 Double click the **CommunityClient** document.
- 4 Add the full path to your update site (including http://) in the URL for UIM Provisioning field.
- 5 Copy this URL to the Sametime update site URL field in the Policy which applies to the users.
- 6 Save and close the stconfig.nsf file.

Installing the SCOPIA Connector from an Update Site

- 7 Using the web-based server administrator (<http://<server>/stcenter.nsf>) log in as the administrator. Where <server> stands for either the IP address or FQDN of the Sametime Server.
- 8 Click the **Administer the server** link.
- 9 Click the **Policies** link.
- 10 Click the **Sametime Default Policy** link.
- 11 In the Instant Messaging section, modify the Sametime update site URL with local update site on the Sametime server.
- 12 Click **Go** to save your changes.
- 13 Use another web page and run the Domino Server Administrator (<http://<server>/webadmin.nsf>).
- 14 Log in and click the **Server** tab at the top of the page.
- 15 Select **Tools > Server > Restart** to restart your Sametime server.

The next time a user logs in to the Sametime Connect client, the plug-in is downloaded and the user is prompted to restart the Sametime client.

INSTALLING THE PLUG-IN VIA THE PREFERENCES.INI FILE (FOR END USERS)

This section describes how you can automatically deploy the SCOPIA Connector plug-in via the Sametime Connect preferences.ini configuration file.

The preferences.ini file is located by default at the following locations on the Sametime Connect client:

- Sametime 7.5.x
`C:\Program Files\ibm\Sametime Connect\plugins\com.ibm.collaboration.realtime.update_1.0.0`
- Sametime 8.0
`C:\Program Files\IBM\Lotus\Sametime Connect\shared\eclipse\plugins\com.ibm.collaboration.realtime.update_8.0.0.20071119-1552`



Procedure

- 1 Create an update site (see [Installing the SCOPIA Connector from an Update Site](#) on page 3 for an explanation of update sites).
- 2 Open the preferences.ini file.

- 3 Type your update site URL as the value for the *adminUpdatePolicyURL* parameter. Use the format

```
adminUpdatePolicyURL=http://server.domain.com/  
directoryname/site.xmls
```

- 4 Save and close the preferences.ini file.

The next time the user logs in to the Sametime Connect client, the client searches for the update site URL in the *URL for UIM Provisioning* parameter of the stconfig.nsf file on the Sametime server.

If the client fails to find the URL, the client searches for the value of the *adminUpdatePolicyURL* parameter of the preferences.ini file.

When the client finds this value, the plug-in is downloaded and the user is prompted to restart the Sametime client.

MANUALLY INSTALLING THE SCOPIA CONNECTOR FROM AN UPDATE SITE

This section describes how Sametime end users can manually install the SCOPIA Connector plug-in on a Sametime Connect client.

The SCOPIA Connector plug-in is available for download from an update site. For more information, see [Installing the SCOPIA Connector from an Update Site](#) on page 3.

Note Sametime Administrators may prevent end users from performing manual downloads. For more information, see [Preventing Manual Downloading](#) on page 6.



Procedure

- 1 In the Sametime Connect client user interface, choose
 - (for Sametime 7.5 CF1) **File > Manage Updates > Download Plugins**
 - (for Sametime 7.5.1 and 8.0) **Tools > Plug-ins > Install plug-ins.**
- 2 If you have a previous version of the plug-in already installed, the installer prompts you to search for updates to the currently installed features. In the Feature Updates window, choose **Search for updates of the currently installed features**, and then go to [step 9](#).

Installing the SCOPIA Connector from an Update Site

- 3 If you do not have a previous version of the plug-in installed, in the Feature Updates window choose **Search for new features to install**, and click **Next**.
 - 4 In the Update sites to visit window, click **Add Remote Location** (or **New Remote Site** for Sametime 7.5.1 CF1).
 - 5 Type an update site name and URL.
For example, name “SCOPIA Connector” and URL `http://<server>/sametime`.
Where <server> stands for either the IP address or FQDN of the server hosting the update site.
 - 6 Click **OK** to save the location.
 - 7 Click the checkbox for the new location.
 - 8 Click **Finish**.
 - 9 In the Search Results window, expand the tree labeled with the name that you typed at [step 5](#) to view all available SCOPIA Connector plug-ins.
 - 10 Choose the latest version of the SCOPIA Connector plug-in and click **Next**.
 - 11 In the Feature License window, accept the terms of the license agreement and click **Next**.
 - 12 In the Installation window, click **Finish**.
 - 13 Click **Install** or **Install All**.
If the installation is successful, you are prompted to restart the Sametime client to access to the new plug-ins.
Installation is now complete and the SCOPIA Connector plug-in Preferences window is now available.
-

PREVENTING MANUAL DOWNLOADING



This section describes how Sametime administrators can prevent end users from performing manual downloads to a Sametime Connect client.

Procedure

- 1 On the Sametime server host machine, open the `sametime.ini` configuration file located at `\Lotus\Domino`.
- 2 Under the `[config]` section, add the following line:
`DisableConnectPluginUpdates=1`.

- 3 Restart the server and reconnect with the client.

The user options are grayed out.

In the Sametime Connect client user interface, the options under **Tools > Plug-ins** are disabled.

INSTALLING THE SCOPIA CONNECTOR WITHOUT AN HTTP SERVER



This section describes how to install the SCOPIA Connector plug-in in Sametime Connect client from a local file without using an HTTP server. To do this, you locate the update site in a shared network directory. Users can then access this directory from the Sametime Client interface.

Procedure

- 1 Save the **sametime** directory to a shared network location.
- 2 In the Sametime Connect client user interface, choose **Tools > Plug-ins > Install plug-ins**.
- 3 In the Feature Updates window choose **Search for new features to install**, and click **Next**.
- 4 In the Update sites to visit window, click **Add Folder Location** (for Sametime 8.0) or **New Local Site** (for Sametime 7.5.1), navigate to the saved **sametime** directory and click **OK**.
- 5 Click **Finish**. The Sametime Connect client now searches for updates from the defined site.
- 6 In the Search Results window, select **sametime**.
- 7 Type a new name for the directory and click **OK**, or leave the directory name unchanged.
- 8 Click **Next**.
- 9 In the Feature License window, accept the terms of the license agreement and click **Next**.
- 10 In the Installation window, click **Finish**.
- 11 Click **Install** or **Install All**.

If the installation is successful, you are prompted to restart the Sametime client to access to the new plug-ins.

Installation is now complete and the SCOPIA Connector plug-in Preferences window is now available.

ABOUT DISTRIBUTION METHODS FOR THE SCOPIA CONNECTOR

You can distribute the SCOPIA Connector plug-in by using these methods:

- “Pushing” the plug-in to all Lotus Sametime Connect users in a specified community.

The plug-in is automatically downloaded to the client when the user launches Lotus Sametime Connect. The user is notified of the update and can have the client restart automatically to load the new plug-in.

For more information, see [How to Automatically Deploy the SCOPIA Connector](#) on page 3.

- Sending the update site URL to users.

Users must then retrieve and install the plug-in manually using the Lotus Sametime Connect Manage Updates user interface.

For more information, see [Manually Installing the SCOPIA Connector from an Update Site](#) on page 5.

You can optionally prevent users from performing this procedure. For more information, see [Preventing Manual Downloading](#) on page 6.

2

INTEGRATING SCOPIA CONNECTOR FOR LOTUS SAMETIME WEB CONFERENCING INTO THE SAMETIME DEPLOYMENT

- [Planning to Deploy IBM Lotus Sametime Web Conferencing with SCOPIA Connector Deployment](#) on page 9
- [Installing the Sametime Connector on the SCOPIA Desktop Server](#) on page 13
- [Preparing the Sametime Servers](#) on page 13
- [Configuring the Sametime Settings on the SCOPIA Desktop Server](#) on page 14

PLANNING TO DEPLOY IBM LOTUS SAMETIME WEB CONFERENCING WITH SCOPIA CONNECTOR DEPLOYMENT

When you integrate IBM Lotus Sametime with SCOPIA Desktop, your users can add real time multipoint video and audio to Sametime Web meetings. In order to accomplish this, you must associate a SCOPIA Desktop Server with an IBM Lotus Sametime Community deployment.

You use two modules for the integration:

- Sametime Connector, a Sametime Community Server application that runs as part of the SCOPIA Desktop Middleware
- Sametime Meeting Room Client Javascript extension that is used to realize the user interface inside the Sametime Meeting Room Client

Sametime Connector detects the start of a Sametime meeting and attaches meeting attributes along with an ID of a SCOPIA Desktop ad-hoc meeting which is generated at that time. The Javascript extension is loaded with the Meeting Room Client when a user joins a Sametime meeting and pulls the video meeting information from the meeting so that all attendees transparently join the same video meeting.

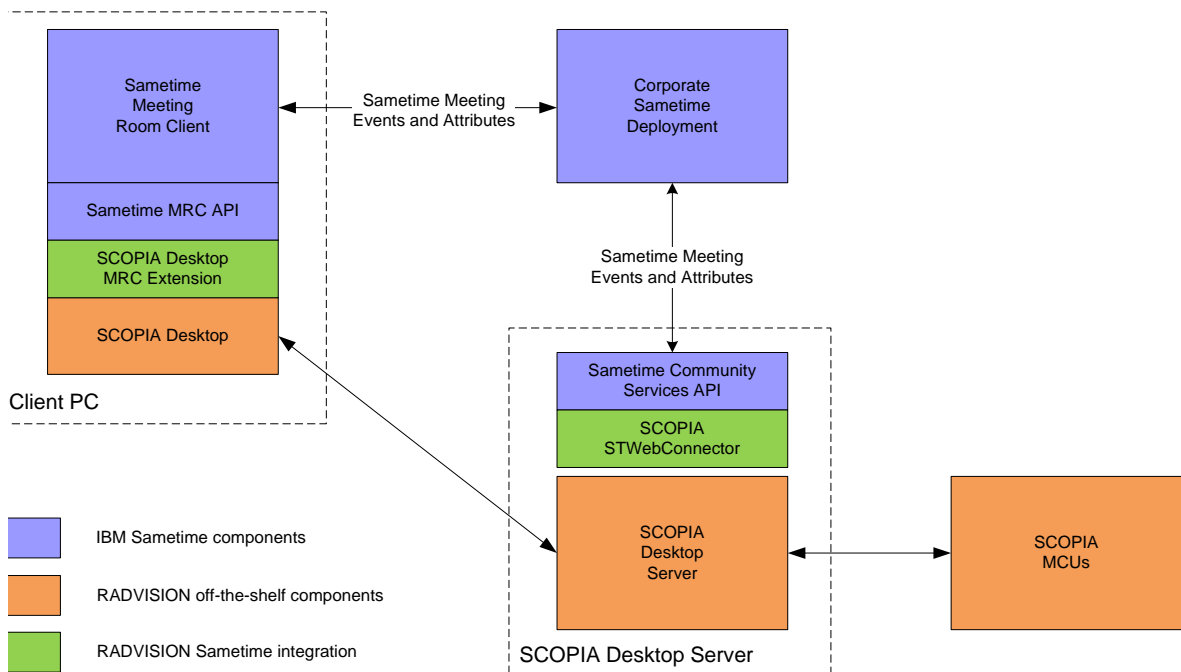
Read these sections to correctly plan your deployment:

- [Simple Sametime Deployments](#) on page 10
- [Multiple Sametime Community Hubs Deployments](#) on page 11

SIMPLE SAMETIME DEPLOYMENTS

Use this diagram when planning your Sametime Deployment.

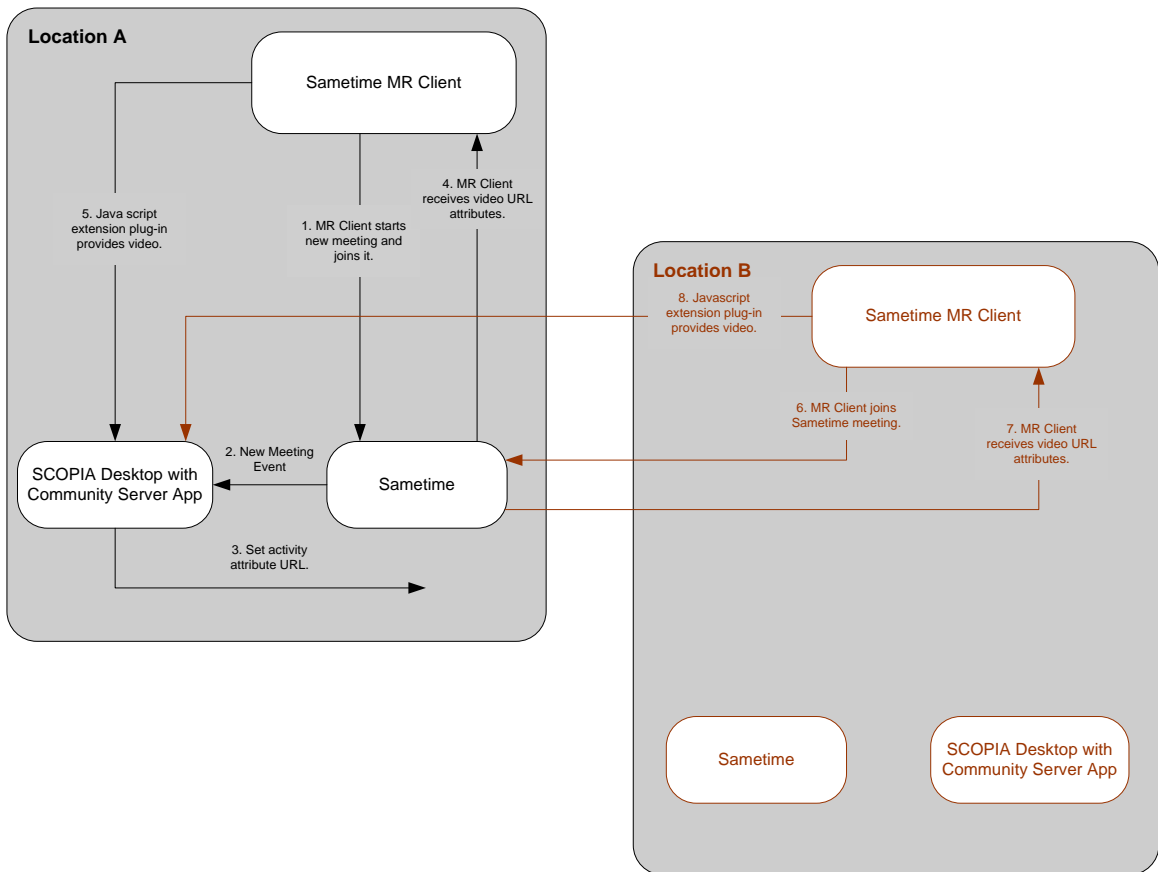
Figure 2-1 Simple Sametime Deployment



MULTIPLE SAMETIME COMMUNITY HUBS DEPLOYMENTS

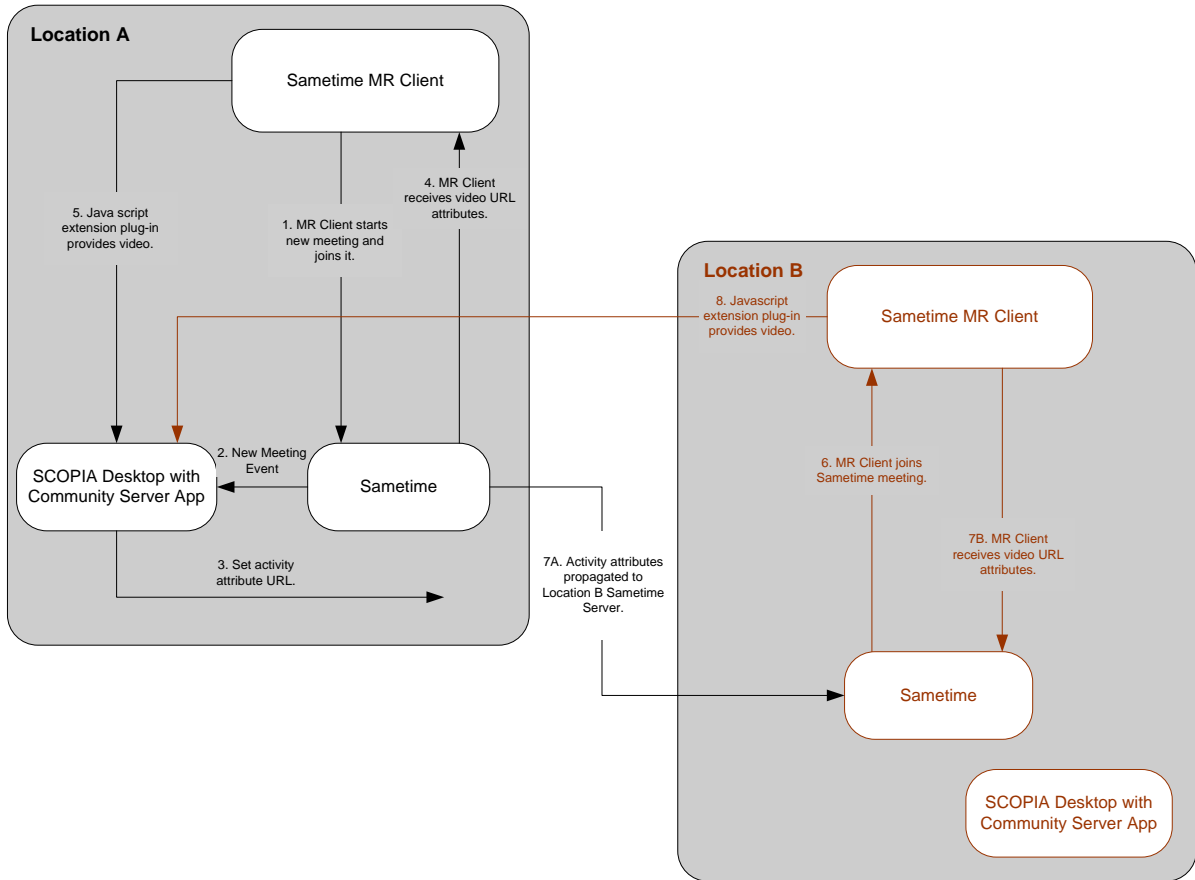
In deployments described in this section, there may be multiple community hubs. Users schedule meetings through their home Sametime Server and may invite users from the same home server as well as users from other Community Server clusters. The meetings may be hosted on the home Sametime Server of the meeting creator as shown on [Figure 2-2](#). In this case, meeting attributes do not need to be propagated to the other server.

Figure 2-2 Multiple Sametime Community Hub Deployment for non-propagated meetings



Alternatively, meetings may be hosted on different Sametime Servers. In this case, the meeting information and attributes are propagated from the home Sametime Server to the other server as shown on [Figure 2-3](#) on page 12.

Figure 2-3 Multiple Sametime Community Hub Deployment for propagated meetings



INSTALLING THE SAMETIME CONNECTOR ON THE SCOPIA DESKTOP SERVER



Procedure

- 1 Install SCOPIA Desktop Server.
 - 2 On the SCOPIA Desktop Server, navigate to this location:
>*InstallDir*>*SCOPIA Desktop\SametimeWeb*.
 - 3 Double-click the *enable_sametime.vbs* file.
 - 4 Click **OK** in the confirmation message.
When the installation is completed, a message is displayed explaining that the Sametime Connector is installed and the log file is created.
-

PREPARING THE SAMETIME SERVERS

- [Enabling Community Services Connectivity](#) on page 13
- [Installing the Meeting Room Client Javascript Extension](#) on page 14

ENABLING COMMUNITY SERVICES CONNECTIVITY

To prepare the Sametime server for the SCOPIA Connector for IBM Lotus Sametime Web Conferencing, you must edit the Sametime configuration: open the IBM Domino Administrator Application and change the IP address configuration of the SCOPIA Desktop Server to allow connection to Community Services. Perform this procedure on every Sametime server which has a SCOPIA Desktop Server associated with it.



Procedure

- 1 Open the IBM Domino Administrator application.
- 2 Click the **Domain** tab.
- 3 Click the **Files** tab.
- 4 Navigate to this location: *\Program Files\IBM\Lotus\Domino\Data*.
- 5 Double-click the Sametime Configuration file.

- 6 Click **By Form** in the left pane.
 - 7 Right-click the **CommunityConnectivity**, and then select **Edit**.
The form opens.
 - 8 Enter the IP address of the SCOPIA Desktop Server in the Community Trusted IPS field.
 - 9 Click **File > Save**.
-

INSTALLING THE MEETING ROOM CLIENT JAVASCRIPT EXTENSION



In order to enable the video integration, you need to copy a file to the Sametime server. This file was placed on the SCOPIA Desktop Server during the SCOPIA Connector installation.

Procedure

- 1 On the SCOPIA Desktop Server, navigate to this location:
Program Files\Radvision\SCOPIA Desktop\SametimeWeb
 - 2 Copy the *SDMrcExtension.js* file.
 - 3 On the Sametime server, navigate to this location:
\Program Files\Lotus\Domino\data\domino\html\sametime\jsext
 - 4 Paste the copied file into this location.
-

CONFIGURING THE SAMETIME SETTINGS ON THE SCOPIA DESKTOP SERVER

You need to configure the SCOPIA Desktop Server to work with the Sametime Server.

Before You Begin

- Access the SCOPIA Desktop Administration web user interface.
- Verify the Sametime Server address.
- Verify which port on the Sametime Server you need to assign to the SCOPIA Desktop Server.



Procedure

- 1 Click **Sametime** in the sidebar.
- 2 Enter the Sametime Server address.

- 3 Enter the port on the Sametime Server.
The default port is 1516.
- 4 Enter the meeting prefix for the SCOPIA Desktop Server to use for the Sametime meetings.
- 5 If necessary, set the number of video panes displayed in the Conference Client pane when it is opened in the Sametime Meeting Room window:
 - a Select **Set the initial view that users will see when they join a Sametime meeting.**
 - b Click one of these options:
 - ❖ **1 Video**
 - ❖ **2 Videos**
- 6 If necessary, select **Enable Audio in SCOPIA Desktop for Sametime meetings.**
- 7 If necessary, select **Allow only the Sametime Meeting Chair to add video to a meeting.** This allows a Sametime Meeting chair to control when the video pane is displayed in the user's meeting room client.

Note This feature is not available if the SCOPIA Connector is configured to work with the Sametime Server version 7.5.1.

- 8 If necessary, select **Allow only the Sametime Meeting Chair to moderate a meeting.** This determines whether audio and video moderation functions are enabled only a Sametime Meeting chair or for all participants in a SCOPIA Desktop meeting.
 - 9 Click **OK** or **Apply**.
 - 10 Verify that the connection to the Sametime Server is successful:
 - a Click **Status** in the sidebar.
 - b Click the link showing the IP address of the Sametime Server to display the settings.

The indicator next to the link shows whether or not the connection to the Sametime server is successful. When the indicator is red, a tooltip containing error details is available. Click the red indicator to view further error information.
-

Configuring the Sametime Settings on the SCOPIA Desktop Server