

iVIEW Suite Add-on
for IBM Lotus SameTime 8.5



RADVISION[®]
Delivering the Visual Experience[®]

NOTICE

© 2005-2010 RADVISION Ltd. All intellectual property rights in this publication are owned by RADVISION Ltd and are protected by Italy and United States copyright laws, other applicable copyright laws and international treaty provisions. RADVISION Ltd retains all rights not expressly granted.

This publication is RADVISION confidential. No part of this publication may be reproduced in any form whatsoever or used to make any derivative work without prior written approval by RADVISION Ltd.

No representation of warranties for fitness for any purpose other than what is specifically mentioned in this guide is made either by RADVISION Ltd or its agents.

RADVISION Ltd reserves the right to revise this publication and make changes without obligation to notify any person of such revisions or changes. RADVISION Ltd may make improvements or changes in the product(s) and/or the program(s) described in this documentation at any time.

If there is any software on removable media described in this publication, it is furnished under a license agreement included with the product as a separate document. If you are unable to locate a copy, please contact RADVISION Ltd and a copy will be provided to you.

Unless otherwise indicated, RADVISION registered trademarks are registered in the United States and other territories. All registered trademarks recognized.

For further information contact RADVISION or your local distributor or reseller.

User Guide for iVIEW Suite Add-on for IBM Lotus SameTime 8.5, March 2010

<http://www.radvision.com>

Rev A01

CONTENTS

1	<i>Overview</i>	1
2	<i>Enabling RADVISION Videoconferencing in IBM SameTime</i>	2
	Creating a Username and Password for Videoconferencing	2
	Configuring SameTime Connect for RADVISION Videoconferences	3
	Configuring Call-In information	6
3	<i>Starting a Conference</i>	7

1

OVERVIEW

The RADVISION iVIEW Suite Add-on for IBM Lotus SameTime 8.5 enables IBM Lotus SameTime users to:

- Invite others to “best of breed” high definition video conferencing.
- Connect to traditional video conferencing arenas such as room systems, telepresence systems, public switched telephone network-based end points, and others.

2

ENABLING RADVISION VIDEOCONFERENCING IN IBM SAMETIME

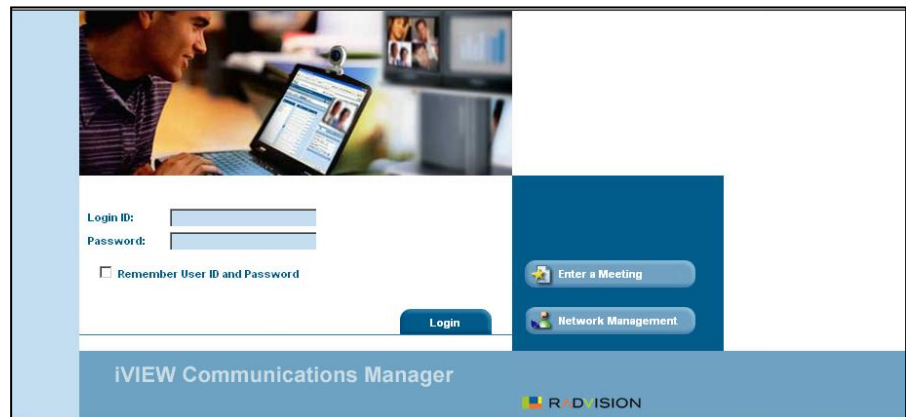
CREATING A USERNAME AND PASSWORD FOR VIDEOCONFERENCING

Before creating a username and password for videoconferencing, you must verify that you can successfully login to iVIEW iCM system. If you are unable to login, contact the system administrator to have your user information synchronized to iVIEW iCM through LDAP connection.

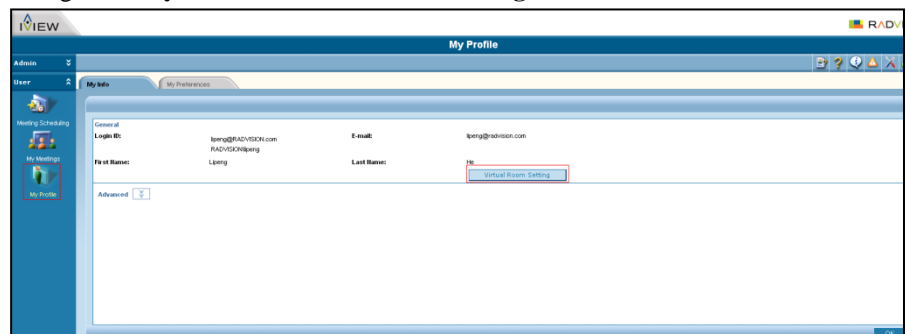
After you successfully login, go to iVIEW iCM, and determine if a virtual room has been assigned to you, and modify configuration settings like meeting moderator PIN or access PIN as required.

Procedure

1. Login to iVIEW iCM.

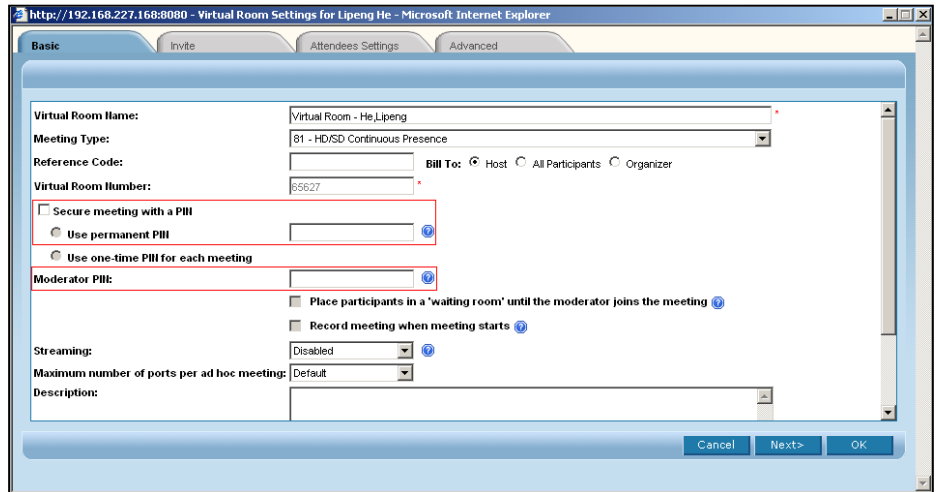


2. Navigate to **My Profile > Virtual Room Setting**.



3. Modify the Virtual Room Setting according to you user role. You can modify the moderator PIN and the access PIN (to secure a meeting with a PIN) can be changed for regular users.

Note: For IBM Lotus Note users, permanent PIN is supported, and one-time PIN is not supported.

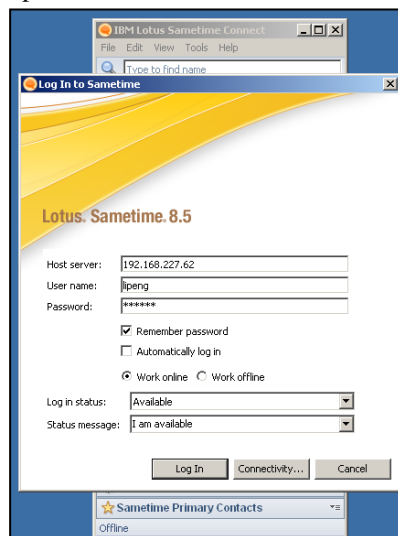


CONFIGURING SAMETIME CONNECT FOR RADVISION VIDEOCONFERENCES

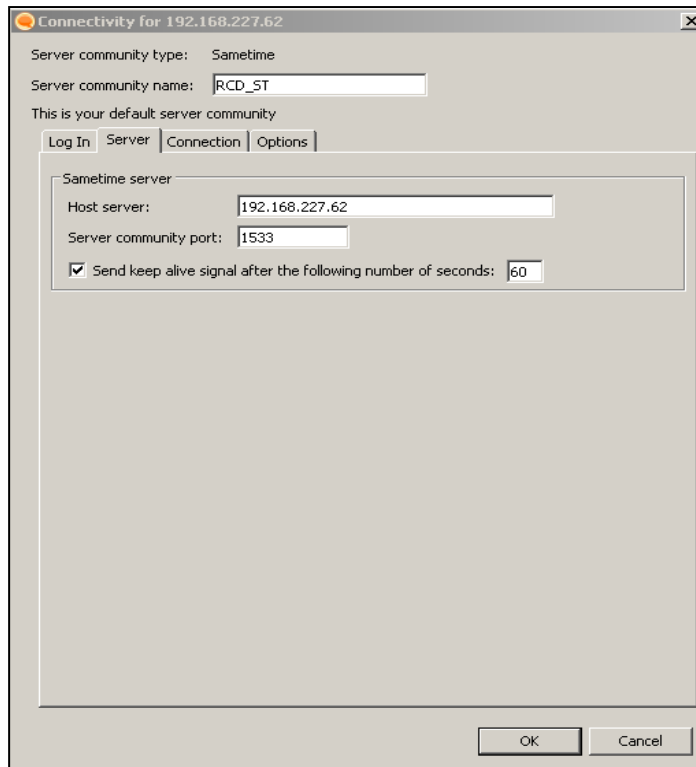
After configuring the iVIEW iCM, you must configure the Lotus SameTime Connect settings.

Procedure

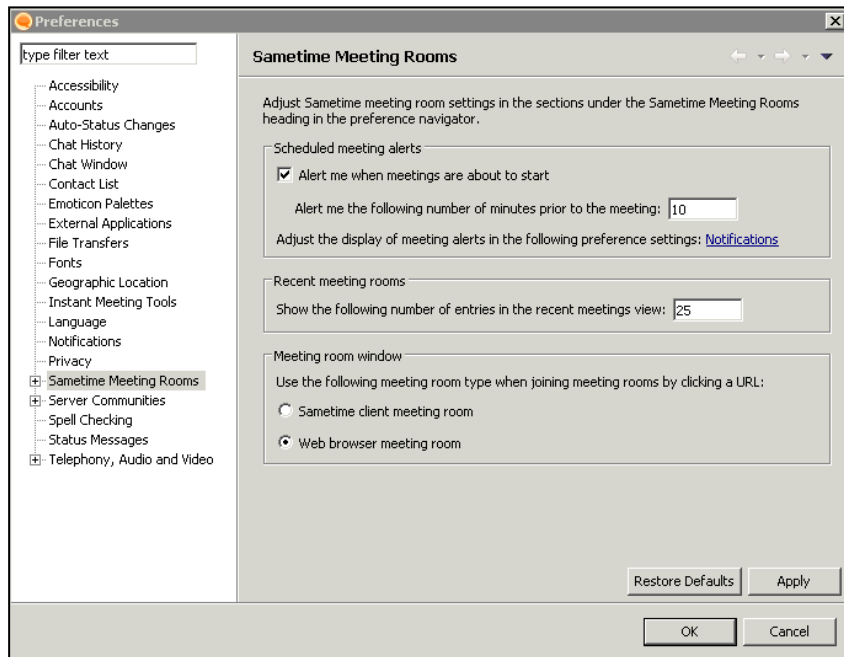
1. Open SameTime Connect.



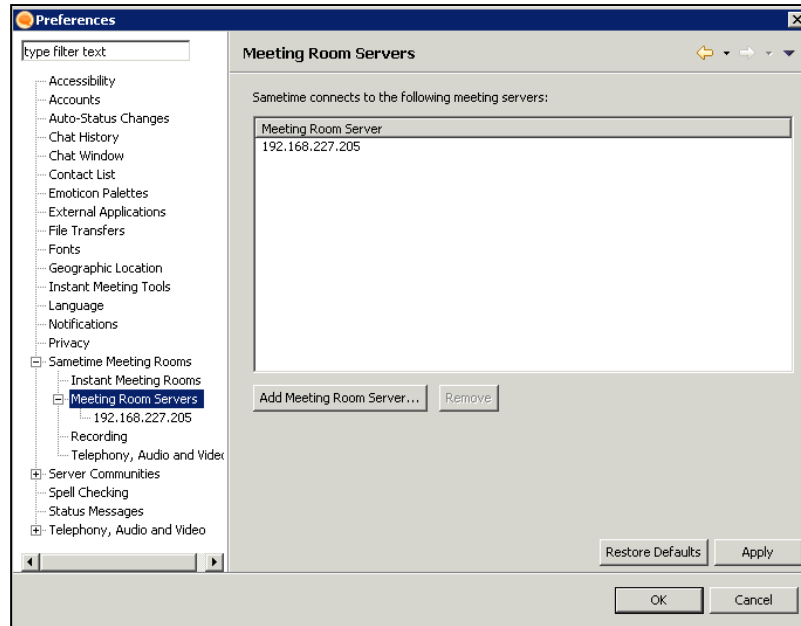
2. Click “Connectivity” to configure community server for the first time login.



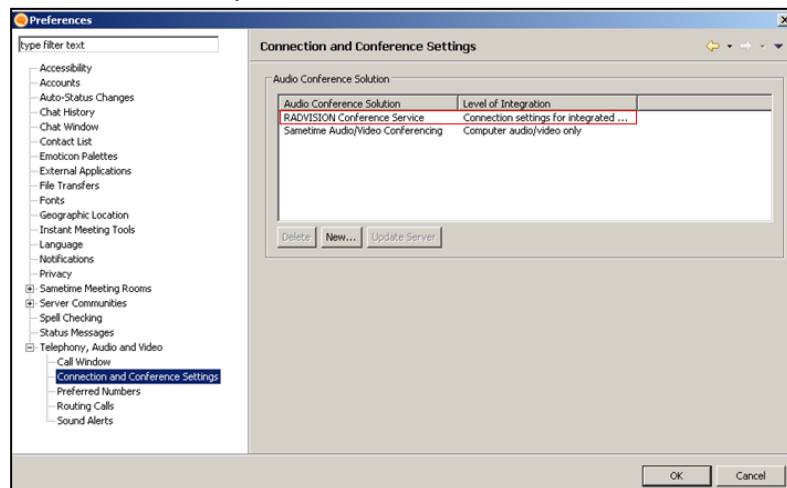
3. Open File > Preferences after successful login.



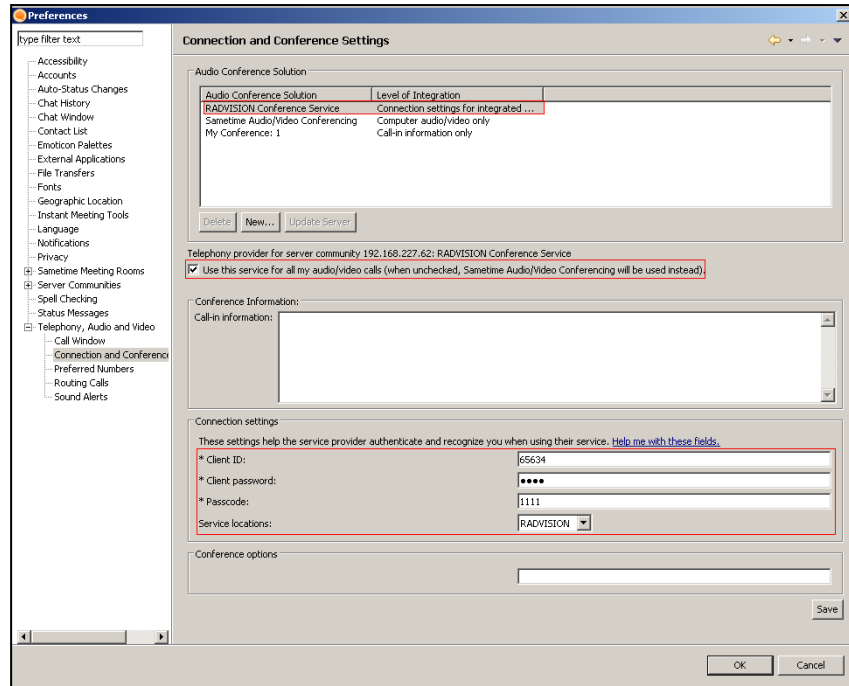
4. Expand **SameTime Meeting Rooms > Meeting Room Servers**. Add a meeting server.



5. Expand **Telephony, Audio and Video > Connection and Conference Settings**. Check if **“RADVISION Conference Service”** is displayed. If not, contact the administrator to verify the conference service.



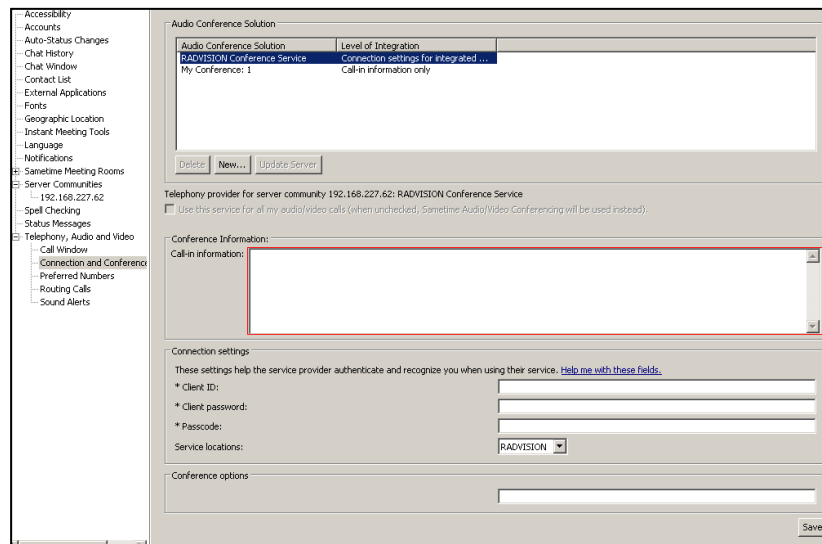
6. Select **“RADVISION Conference Service item”**, and enable **“Use this service for all my audio/video calls”**.
7. Configure the parameters according to your virtual room settings:
 - **Virtual Room Number > Client ID**
 - **Meeting Moderator PIN > Client Password** (optional)
 - **Access PIN > Passcode** (optional, and must be aligned with the virtual room configuration)



8. Select **Save** and select the **OK**.

CONFIGURING CALL-IN INFORMATION

Client users must fill call-in information text box (below) based on a call-in template sent by the administrator.



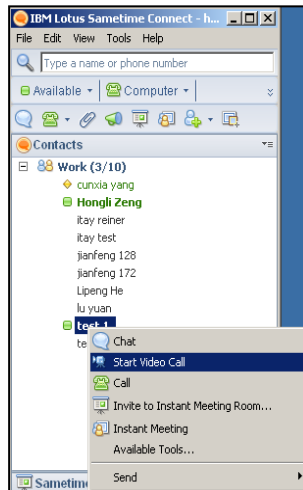
3

STARTING A CONFERENCE

STARTING A VIDEOCONFERENCE WITH SAMETIME CLIENTS

Procedure

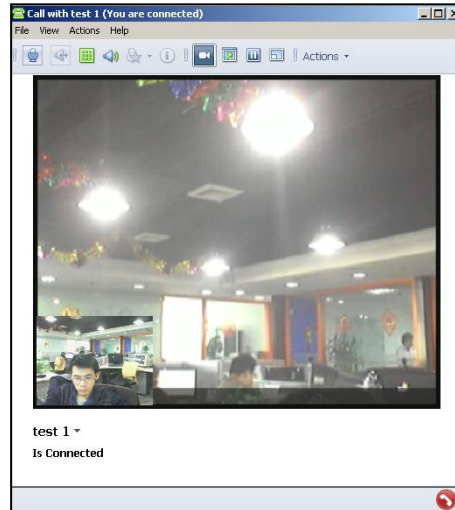
1. Right-click on a SameTime contact. Select the **Start Video Call** item from the pop-up menu.



2. The SameTime contact receives a call invitation; the invited user must select the **Answer Computer** button in order to join this video call.



- Both SameTime clients join this video call.



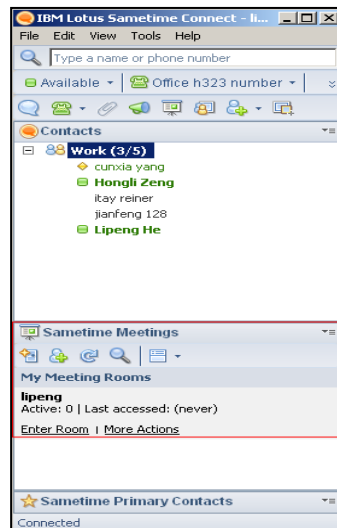
- If you want to invite other SameTime connect users, you must drag other SameTime contacts into the Call Window. Invitees receive conferencing invitations and must select **Join**.

STARTING A CONFERENCE FROM A MEETING ROOM

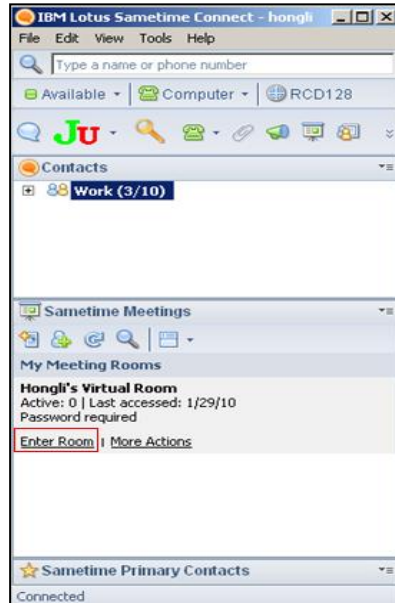
Before starting a conference from a Meeting Room, you should define a meeting room. If you do not define the meeting room, refer the User Guide for the SameTime Connect client.

Procedure

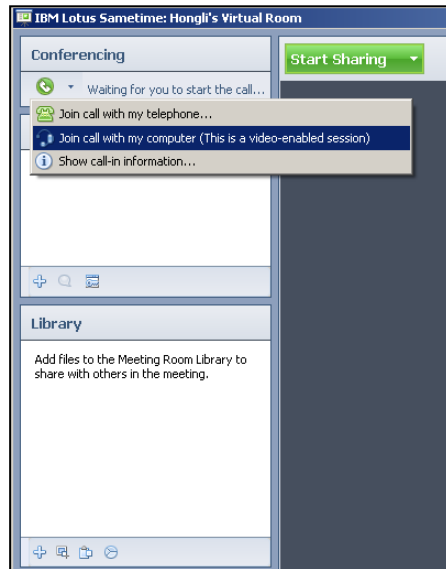
- Define a meeting room.



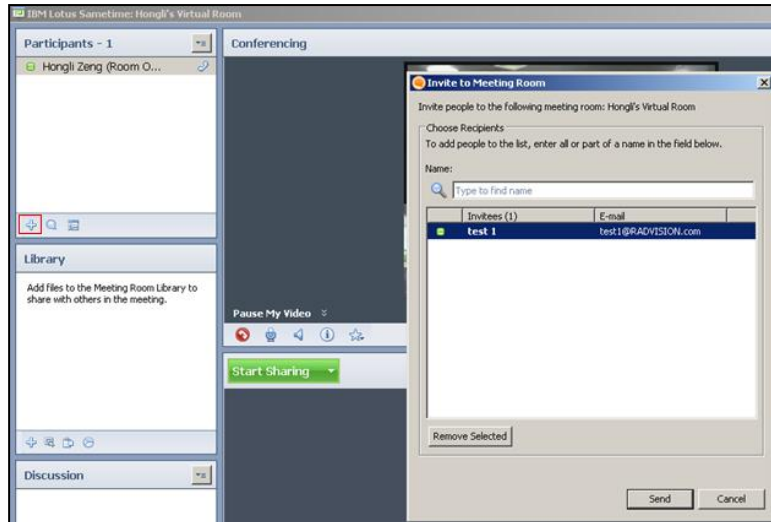
2. Select the **Enter Room** link.



3. In the **Conferencing** panel drop down list, select the “**Join call with my computer (This is a video-enabled session)**” menu item to start the video conference.



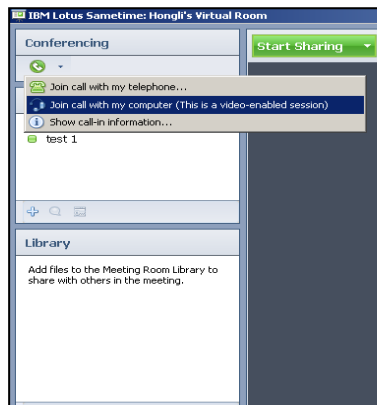
4. Select the **Plus** icon to invite other SameTime contacts into this meeting room. The invitee receives the invitation and selects **Join**.



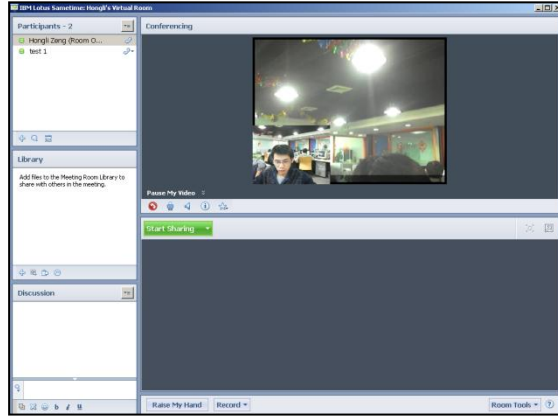
5. The invitee receives a meeting invitation and selects “**Join**” to accept the meeting invitation.



6. The SameTime contact must select “**Join call with my computer (This is a video-enabled session)**” menu item to start the video conference.



7. Both SameTime contacts join the video conference.





www.radvision.com

About RADVISION

RADVISION (NASDAQ: RVSN) is the industry's leading provider of market-proven products and technologies for unified visual communications over IP and 3G networks. With its complete set of standards based video networking infrastructure and developer toolkits for voice, video, data and wireless communications, RADVISION is driving the unified communications evolution by combining the power of video, voice, data and wireless – for high definition video conferencing systems, innovative converged mobile services, and highly scalable video-enabled desktop platforms on IP, 3G and emerging next generation networks. For more information about RADVISION, visit www.radvision.com.

USA/Americas

T +1 201 689 6300
F +1 201 689 6301
infoUSA@radvision.com

EMEA

T +44 20 3178 8685
F +44 20 3178 5717
infoUK@radvision.com

APAC

T +852 3472 4388
F +852 2801 4071
infoAPAC@radvision.com