

iVIEW™ Suite

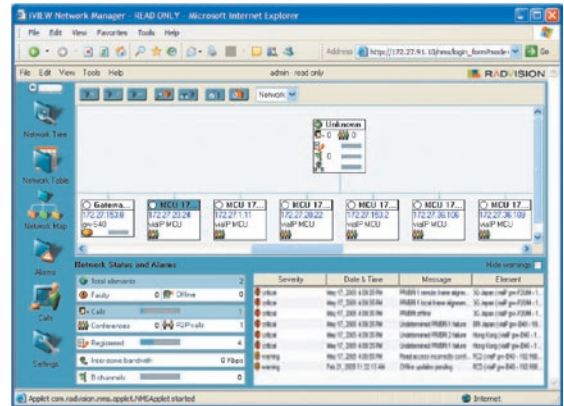
A comprehensive management solution for voice and video collaborative communications



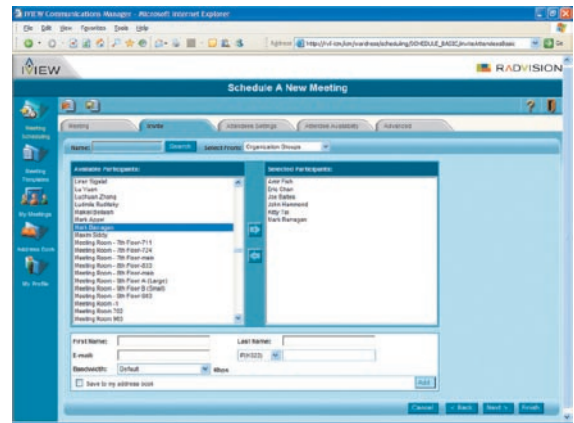
Efficiently manage and monitor your video network elements and easily schedule and control your meetings, for an optimal visual communications experience

iVIEW Suite Highlights

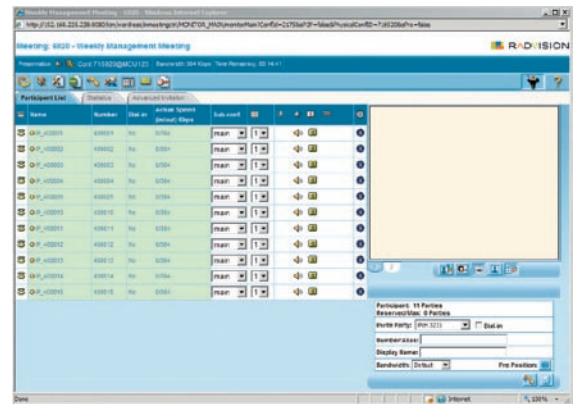
- Global, centralized view of all video endpoints and network devices enabling real-time control, monitoring and maintenance of each element from a single interface
- Easy Web-based scheduling and ad hoc videoconferencing providing resource reservation and bandwidth monitoring
- Comprehensive multiparty conference control allows users to easily invite additional attendees, mute and un-mute participants and change the meeting video layout
- Integration with SIP PBX and H.323 Network allows iVIEW Suite to work with other third party deployments
- Microsoft® Outlook integration for scheduling meetings via familiar application
- Integration with SCOPIA® Desktop for desktop to room system conferencing



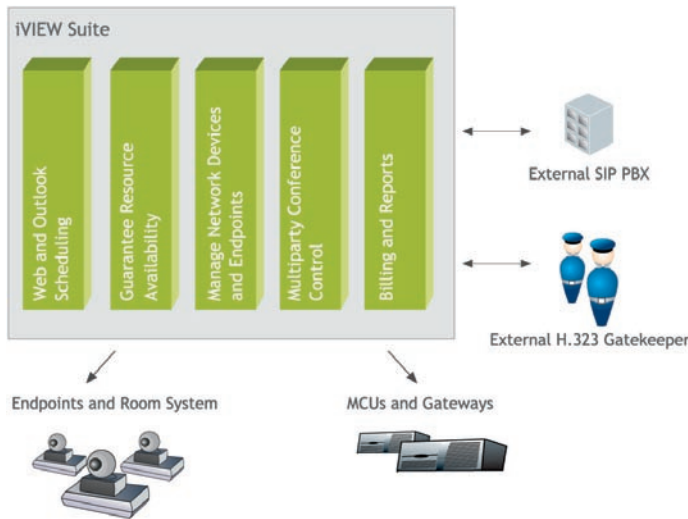
Network view for quick access to endpoints and network devices



Web Scheduling interface - schedule meetings anytime, anywhere



Multiparty Conference Control - easily manage meetings, view participants and detect faults



Designed to manage rich media communications networks, the iVIEW Suite is equipped with the features to manage, control and configure the networks and devices of today - and tomorrow.

iVIEW Suite Packages

The iVIEW Suite manages a network of hundreds of endpoints.

Product Specifications

Network Manager (NMS)	Resource Manager & Scheduler (iCM)	Multilingual support
<p>Elements Management</p> <ul style="list-style-type: none"> Manages all video devices on the network- Gatekeepers, MCUs, gateways as well as endpoints Auto-detection of video endpoints and network devices allows you to discover your entire video network within a single click <p>Easy-to-use element browser</p> <ul style="list-style-type: none"> Network-wide view of calls and conferences Drag and Drop management Click an endpoint to open its individual web management interface Network element configuration Central configuration for various endpoints, MCUs or Gateways Support batch firmware upgrades for Sony endpoints, MCU or Gateway Support configuration download and upload for Sony endpoints, MCU or Gateway Manages multiple firmware versions and multiple sets of configurations <p>Monitoring and alerts</p> <ul style="list-style-type: none"> Complete status and statistics of devices SNMP notifications containing operational status information TRAP severity is customizable to fit any type of deployment Display of events and errors received from elements for error management Trap forwarding to tier 3 manager supported 	<p>Scheduling</p> <ul style="list-style-type: none"> Web-based intuitive scheduling interface, as well as Microsoft Outlook Integration for simplified scheduling experience Allow any type of endpoints to connect to the same conference: H.323, SIP, ISDN, 3G Mobile, POTS phone. Customized personal virtual room for ad hoc or scheduled meetings Video resources reservation (MCU, Gateway, Gatekeeper) Geographical scheduling of video resources and bandwidth based on network topology Least cost routing to reduce ISDN call cost MCU, users and endpoints resource availability check Automatic invite of endpoints (Dial-out) Recurring Meetings Email notifications to meeting participants with individual information Personal address book - to easily retrieve your favorite contacts during scheduling Utilizes Sony embedded endpoint multipoint conferencing capabilities <p>Comprehensive Multiparty Meeting Control</p> <ul style="list-style-type: none"> View and Control meeting participants Invite additional participants Change screen layout Extend or terminate the conference Seamlessly manage cascaded conference <p>Administration features</p> <ul style="list-style-type: none"> CDR for billing purposes Reports and statistics Customized deployment that fits your needs Organizational User Management Organizational Meeting Management 	<p>Administrator (Network Manager):</p> <ul style="list-style-type: none"> English Japanese Simplified Chinese Traditional Chinese Korean <p>User (Resource Manager & Scheduler):</p> <ul style="list-style-type: none"> English Japanese Simplified Chinese Traditional Chinese Korean Portuguese German Italian Spanish French Russian <p>* Note: Multilingual support is available with specific language pack.</p>

Server Requirements

(for iVIEW Suite with internal gatekeeper and standalone iVIEW Suite)

- Pentium 4 2 GHz processor, 1 GB of RAM
- 20 GB Hard Disk space
- Windows® 2000 Server, Windows® 2003 Server

Note: RADVISION AS-10 card for deployment of standalone iVIEW Suite 25, 50, 75, or 100.

Web client requirements

- Windows® Vista, 2000, 2003, XP or ME
- Microsoft Internet Explorer 6.0 or higher

Outlook add-on requirements

- Microsoft Exchange 2000/2003 Server®
- Client: Microsoft Outlook 2000 SP3, Outlook XP, Outlook 2003, Outlook 2007

About RADVISION

RADVISION (NASDAQ: RVSN) is the industry's leading provider of market-proven products and technologies for unified visual communications over IP, 3G and IMS networks. With its complete set of standards-based video networking infrastructure and developer toolkits for voice, video, data and wireless communications, RADVISION is driving the unified communications evolution by combining the power of video, voice, data and wireless - for high definition video conferencing systems, innovative converged mobile services, and highly scalable video-enabled desktop platforms on IP, 3G and emerging next-generation IMS networks. For more information about RADVISION, visit www.radvision.com

USA/Americas
 T +1 201 689 6300
 F +1 201 689 6301
infoUSA@radvision.com

APAC
 T +852 3472 4388
 F +852 2801 4071
infoAPAC@radvision.com

EMEA
 T +44 (0) 20 8757 8817
 F +44 (0) 20 8757 8818
infoUK@radvision.com