

SCOPIA Connector for IBM Lotus Sametime

Release 7.5



NOTICE

© 2005-2010 RADVISION Ltd. All intellectual property rights in this publication are owned by RADVISION Ltd and are protected by United States copyright laws, other applicable copyright laws and international treaty provisions. RADVISION Ltd retains all rights not expressly granted.

This publication is RADVISION confidential. No part of this publication may be reproduced in any form whatsoever or used to make any derivative work without prior written approval by RADVISION Ltd.

No representation of warranties for fitness for any purpose other than what is specifically mentioned in this guide is made either by RADVISION Ltd or its agents.

RADVISION Ltd reserves the right to revise this publication and make changes without obligation to notify any person of such revisions or changes. RADVISION Ltd may make improvements or changes in the product(s) and/or the program(s) described in this documentation at any time.

If there is any software on removable media described in this publication, it is furnished under a license agreement included with the product as a separate document. If you are unable to locate a copy, please contact RADVISION Ltd and a copy will be provided to you.

Unless otherwise indicated, RADVISION registered trademarks are registered in the United States and other territories. All registered trademarks recognized.

Beta

For further information contact RADVISION or your local distributor or reseller.

SCOPIA Connector version 7.5, September 2010

Publication 6

<http://www.radvision.com>

CONTENTS

About This Manual

How to Use This Manual	v
Feedback	vi

1 *Preparing for Installation*

2 *Installing the SCOPIA Connector Plug-in for Lotus Sametime Connect*

Update Sites	3
Installing the SCOPIA Connector Update Site from the CD-ROM	4
How to Install the SCOPIA Connector from an Update Site	5
How to Automatically Deploy the SCOPIA Connector	5
Manually Installing the SCOPIA Connector from an Update Site	7
Preventing Manual Downloading	9
Installing the SCOPIA Connector without an HTTP Server	9
Distribution Methods for the SCOPIA Connector	10

3 *Integrating SCOPIA Connector for Lotus Sametime Web Conferencing into the Sametime Deployment*

About Deploying IBM Lotus Sametime Web Conferencing with SCOPIA Connector Deployment	11
Simple Sametime Deployments	12
Multiple Sametime Community Hubs Deployments	13
Installing the Sametime Connector on the SCOPIA Desktop Server	15

How to Prepare the Sametime Servers	15
Enabling Community Services Connectivity	15
Installing the Meeting Room Client Javascript Extension	16
Configuring the Sametime Settings on the SCOPIA Desktop Server	16

ABOUT THIS MANUAL

The [SCOPIA Connector Connector for IBM Lotus Sametime Installation and Administration Guide](#) provides information for administrators about SCOPIA Connector deployment, and installation in the IBM Lotus Sametime and IBM Lotus Sametime Web Conferencing environment.

Note The SCOPIA Connector plug-in works with the following IBM product versions:

- Sametime 8.0, 8.0.1, and 8.0.2
- Sametime 8.5
- Lotus Notes 8.0

This manual refers to options available in Sametime 8.0.

Configuration options may vary according to the product version you are using.

HOW TO USE THIS MANUAL

This manual provides information about deploying both SCOPIA Connector for Lotus Sametime and for SCOPIA Connector for Lotus Sametime Web Conferencing:

- Chapter 2, [Installing the SCOPIA Connector Plug-in for Lotus Sametime Connect](#) on page 3
- Chapter 3, [Integrating SCOPIA Connector for Lotus Sametime Web Conferencing into the Sametime Deployment](#) on page 11

FEEDBACK

The team at RADVISION constantly endeavors to provide accurate and informative documentation. If you have comments or suggestions regarding improvements to future publications, we would value your feedback.

Please send your comments to doc_comments@radvision.com.

We thank you for your contribution.

1

PREPARING FOR INSTALLATION

Prior to installing SCOPIA Connector, verify that these conditions are fulfilled:

- IBM Lotus Sametime is configured with Working Sametime installation.
- SCOPIA Desktop Server is installed and configured.
- SCOPIA Desktop product CD-ROM is available.

2

INSTALLING THE SCOPIA CONNECTOR PLUG-IN FOR LOTUS SAMETIME CONNECT

This section describes how administrators can automatically deploy the SCOPIA Connector plug-in throughout a network, and how end users can manually install the plug-in on a Sametime Connect client.

- [Update Sites](#) on page 3
- [Installing the SCOPIA Connector Update Site from the CD-ROM](#) on page 4
- [How to Install the SCOPIA Connector from an Update Site](#) on page 5
- [Distribution Methods for the SCOPIA Connector](#) on page 10

UPDATE SITES

An update site is a specific directory layout with an XML file that specifies all the available plug-ins. The method of how the update site is presented to the client can vary (for example, as a web site or through the local file system).

If SCOPIA Desktop is detected when installing SCOPIA Connector, an Eclipse update site is created for you in the SCOPIA Desktop installation directory at `<installdir>/Tomcat/webapps/ROOT/sametime`. You can use the update site at this location, or you can copy the files from the update site to a location of your choice.

An update site is a specific directory layout with an XML file that specifies all the available plug-ins. You can variously present the update site to the client; for example, as a web site or via the local file system.

If SCOPIA Desktop is detected when installing SCOPIA Connector, an Eclipse update site is created for you in the SCOPIA Desktop installation directory at `<installdir>/Tomcat/webapps/ROOT/sametime`.

We recommend using the installer to create the update site. The update site is usually set up on the same server as SCOPIA Desktop.

If you already have plug-ins that you automatically push via an update site, you need to merge the SCOPIA Connector `site.xml` file with the existing `site.xml` file, and copy the contents of the SCOPIA Connector features and plug-ins folders into the existing corresponding folders.

INSTALLING THE SCOPIA CONNECTOR UPDATE SITE FROM THE CD-ROM



Install the SCOPIA Connector update site from the SCOPIA Desktop CD-ROM.

Procedure

- 1 Insert the CD-ROM.
- 2 Wait for the autorun menu screen to display.
- 3 Select SCOPIA Connector **for IBM Lotus Sametime**.
- 4 Select **Install Update Site**.
- 5 Select the `setup.exe` file and follow the on-screen instructions.
The **Choose Installation Location** screen detects if SCOPIA Desktop is installed.
- 6 If SCOPIA Desktop is detected, the installer attempts to create an update site at
`<installdir>/Tomcat/webapps/ROOT/sametime`
The default update site URL is `http://<server>/sametime`.
Where `<server>` stands for either the IP address or FQDN of the server on which you install the SCOPIA Connector.
- 7 Alternatively, you can configure the installer to create an update site at a different location.

- 8 If SCOPIA Desktop is not detected, define the location at which you want the installer to place the files needed for an update site.

By default, the installer places the files at

```
\Program Files\Radvision\SCOPIA Connector for  
IBM Lotus Sametime
```

You must either place the files needed for an update site under a Sametime update site, or distribute them manually.

HOW TO INSTALL THE SCOPIA CONNECTOR FROM AN UPDATE SITE

HOW TO AUTOMATICALLY DEPLOY THE SCOPIA CONNECTOR

INSTALLING THE SCOPIA CONNECTOR VIA THE COMMUNITY CLIENT DOCUMENT (FOR ADMINISTRATORS)



You can install SCOPIA Connector either automatically or manually.

- [How to Automatically Deploy the SCOPIA Connector](#) on page 5
- [Manually Installing the SCOPIA Connector from an Update Site](#) on page 7
- [Installing the SCOPIA Connector via the Community Client Document \(for Administrators\)](#) on page 5
- [Installing the Plug-in via the preferences.ini File \(for End Users\)](#) on page 6

This section describes how you can automatically deploy the SCOPIA Connector plug-in via the Sametime server Community Client Document.

Procedure

- 1 Access the SCOPIA Desktop Server.
- 2 Access the Sametime Server.
- 3 Double-click the **Domino Admin** icon on the desktop.
- 4 Sign in using administrator credentials.
- 5 Select the **Domain** tab.
- 6 Select the **Files** tab.
- 7 Double-click the Sametime Configuration (**stconfig.nsf**) document.
- 8 Select **By Form**.
- 9 Right-click and select **Edit CommunityClient** document.
- 10 Locate the UIM Provisioning field.

How to Install the SCOPIA Connector from an Update Site

- 11 Edit the URL in the field by adding the full path to your update site (including http://). For example, http://<server name or IP>/sametime.
 - 12 Copy this URL to the Sametime update site URL field in the Policy which applies to the users:
 - a Using the web-based server administrator (http://<sametime server>/stcenter.nsf) sign in as the administrator.
 - b Where <server> stands for either the IP address or FQDN of the Sametime Server.
 - c Select the **Administer the server** link.
 - d Select the **Policies** link.
 - e Select the **Sametime Default Policy** link.
 - f Scroll down to the Instant Messaging section.
 - g Modify the Sametime update site URL with local update site on the Sametime server.
 - h Check the **Override all policies** check box to immediately push the new configuration to clients.
 - i Select **OK** to save your changes.
 - j Use another web page and run the Domino Server Administrator (http://<server>/webadmin.nsf).
 - k Sign in and select the **Server** tab at the top of the page.
 - l Select **Tools > Server > Restart** to restart your Sametime server.

The next time a user signs in to the Sametime Connect client, the plug-in is downloaded and the user is prompted to restart the Sametime client.
 - 13 Save and close the stconfig.nsf file.
-

INSTALLING THE PLUG-IN VIA THE PREFERENCES.INI FILE (FOR END USERS)

This section describes how you can automatically deploy the SCOPIA Connector plug-in via the Sametime Connect preferences.ini configuration file. The preferences.ini file is located by default at the following locations on the Sametime Connect client:

- Sametime 7.5.x
C:\Program Files\ibm\Sametime Connect\plugins\
com.ibm.collaboration.realtime.update_1.0.0

■ Sametime 8.0

```
C:\Program Files\IBM\Lotus\Sametime  
Connect\shared\  
eclipse\plugins\com.ibm.collaboration.realtime  
.update_8.0.0.20071119-1552
```



Procedure

- 1 Access the SCOPIA Desktop Server.
- 2 Create an update site (see [How to Install the SCOPIA Connector from an Update Site](#) on page 5 for an explanation of update sites).
- 3 Open the preferences.ini file.
- 4 Enter your update site URL as the value for the *adminUpdatePolicyURL* parameter. Use the format
adminUpdatePolicyURL=http://server.domain.com/
sametime/site.xml
- 5 Save and close the preferences.ini file.

The next time the user signs in to the Sametime Connect client, the client searches for the update site URL in the *URL for UIM Provisioning* parameter of the stconfig.nsf file on the Sametime server.

If the client fails to find the URL, the client searches for the value of the *adminUpdatePolicyURL* parameter of the preferences.ini file.

When the client finds this value, the plug-in is downloaded and the user is prompted to restart the Sametime client.

**MANUALLY INSTALLING
THE SCOPIA
CONNECTOR FROM AN
UPDATE SITE**

This section describes how Sametime users can manually install the SCOPIA Connector plug-in on a Sametime Connect client.

The SCOPIA Connector plug-in is available for download from an update site. For more information, see [How to Install the SCOPIA Connector from an Update Site](#) on page 5.

Note Sametime Administrators may prevent users from performing manual downloads. For more information, see [Preventing Manual Downloading](#) on page 9.



Procedure

- 1 In the Sametime Connect client user interface, choose
 - (for Sametime 7.5 CF1) **File > Manage Updates > Download Plugins**
 - (for Sametime 7.5.1 and 8.0) **Tools > Plug-ins > Install plug-ins.**
- 2 If you have a previous version of the plug-in already installed, the installer prompts you to search for updates to the currently installed features. In the Feature Updates window, choose **Search for updates of the currently installed features**, and then go to [step 9](#).
- 3 If you do not have a previous version of the plug-in installed, in the Feature Updates window choose **Search for new features to install**, and select **Next**.
- 4 In the Update sites to visit window, select **Add Remote Location** (or **New Remote Site** for Sametime 7.5.1 CF1).
- 5 Enter an update site name and URL.
For example, name “SCOPIA Connector” and URL
`http://<server>/sametime.`
Where <server> stands for either the IP address or FQDN of the server hosting the update site.
- 6 Select **OK** to save the location.
- 7 Check the checkbox for the new location.
- 8 Select **Finish**.
- 9 In the Search Results window, expand the tree labeled with the name that you entered at [step 5](#) to view all available SCOPIA Connector plug-ins.
- 10 Choose the latest version of the SCOPIA Connector plug-in and click **Next**.
- 11 In the Feature License window, accept the terms of the license agreement and select **Next**.

- 12 In the Installation window, select **Finish**.

If the installation is successful, you are prompted to restart the Sametime client to access to the new plug-ins.

Installation is now complete and the SCOPIA Connector plug-in Preferences window is now available.

PREVENTING MANUAL DOWNLOADING



This section describes how Sametime administrators can prevent users from performing manual downloads to a Sametime Connect client.

Procedure

- 1 On the Sametime server host machine, open the `sametime.ini` configuration file located at `\Lotus\Domino`.
- 2 Under the `[config]` section, add the following line:
`DisableConnectPluginUpdates=1`.
- 3 Restart the server and reconnect with the client.
The user options are grayed out.

In the Sametime Connect client user interface, the options under **Tools > Plug-ins** are disabled.

INSTALLING THE SCOPIA CONNECTOR WITHOUT AN HTTP SERVER



This section describes how to install the SCOPIA Connector plug-in in Sametime Connect client from a local file without using an HTTP server. To do this, you locate the update site in a shared network directory. Users can then access this directory from the Sametime Client interface.

Procedure

- 1 Save the **sametime** directory to a shared network location.
- 2 In the Sametime Connect client user interface, choose **Tools > Plug-ins > Install plug-ins**.
- 3 In the Feature Updates window choose **Search for new features to install**, and select **Next**.
- 4 In the Update sites to visit window, select **Add Folder Location** (for Sametime 8.0) or **New Local Site** (for Sametime 7.5.1), navigate to the saved **sametime** directory and select **OK**.

- 5 Select **Finish**. The Sametime Connect client now searches for updates from the defined site.
- 6 In the Search Results window, select **sametime**.
- 7 Enter a new name for the directory and select **OK**, or leave the directory name unchanged.
- 8 Select **Next**.
- 9 In the Feature License window, accept the terms of the license agreement and select **Next**.
- 10 In the Installation window, select **Finish**.
- 11 Select **Install** or **Install All**.

If the installation is successful, you are prompted to restart the Sametime client to access to the new plug-ins.

Installation is now complete and the SCOPIA Connector plug-in Preferences window is now available.

DISTRIBUTION METHODS FOR THE SCOPIA CONNECTOR

You can distribute the SCOPIA Connector plug-in by using these methods:

- “Pushing” the plug-in to all Lotus Sametime Connect users in a specified community.

The plug-in is automatically downloaded to the client when the user launches Lotus Sametime Connect. The user is notified of the update and can choose to automatically restart the client to load the new plug-in.

For more information, see [How to Automatically Deploy the SCOPIA Connector](#) on page 5.

- Sending the update site URL to users:

Users must retrieve and install the plug-in manually using the Lotus Sametime Connect Manage Updates user interface.

For more information, see [Manually Installing the SCOPIA Connector from an Update Site](#) on page 7.

You can optionally prevent users from performing this procedure. For more information, see [Preventing Manual Downloading](#) on page 9.

3

INTEGRATING SCOPIA CONNECTOR FOR LOTUS SAMETIME WEB CONFERENCING INTO THE SAMETIME DEPLOYMENT

- [About Deploying IBM Lotus Sametime Web Conferencing with SCOPIA Connector Deployment](#) on page 11
- [Installing the Sametime Connector on the SCOPIA Desktop Server](#) on page 15
- [How to Prepare the Sametime Servers](#) on page 15
- [Configuring the Sametime Settings on the SCOPIA Desktop Server](#) on page 16

ABOUT DEPLOYING IBM LOTUS SAMETIME WEB CONFERENCING WITH SCOPIA CONNECTOR DEPLOYMENT

When you integrate IBM Lotus Sametime with SCOPIA Desktop, your users can add real-time multipoint video and audio to Sametime Web meetings. To accomplish this, you must associate a SCOPIA Desktop Server with an IBM Lotus Sametime Community deployment.

You use two modules for the integration:

- Sametime Connector, a Sametime Community Server application that runs as part of the SCOPIA Desktop middleware
- Sametime Meeting Room Client Javascript extension that is used to realize the user interface inside the Sametime Meeting Room Client

Sametime Connector detects the start of a Sametime meeting and attaches meeting attributes along with an ID of a SCOPIA Desktop ad-hoc meeting which is generated at that time. The Javascript extension is loaded with the Meeting Room Client when a user joins a Sametime meeting and pulls the video meeting information from the meeting so that all attendees transparently join the same video meeting.

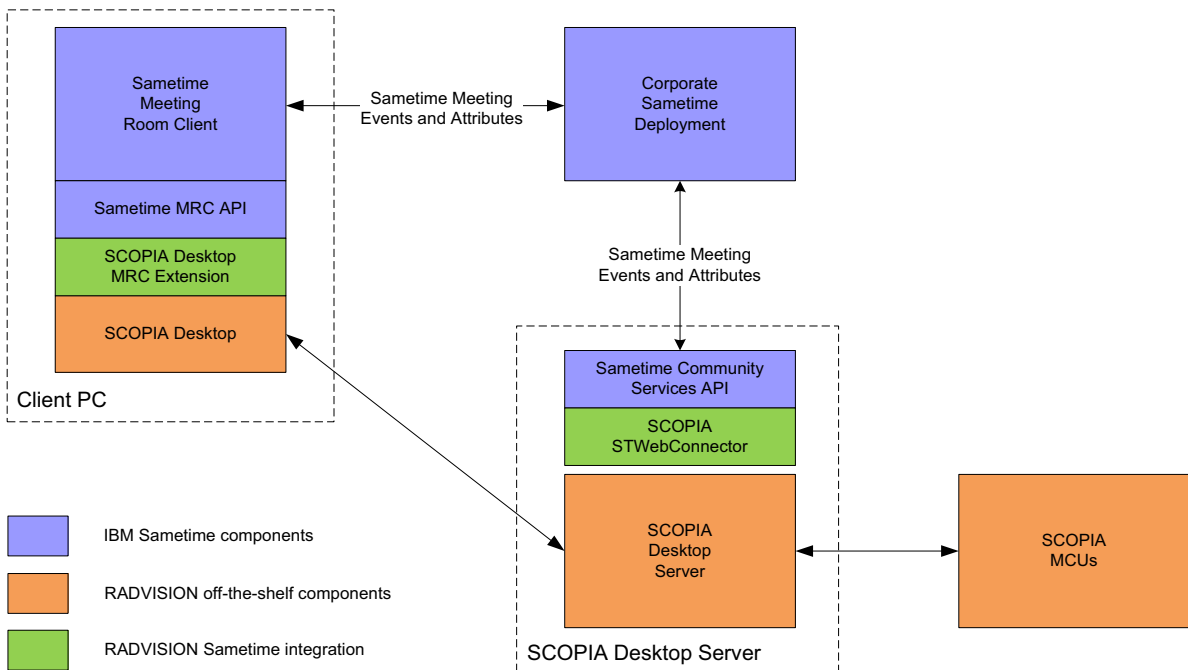
Read these sections to correctly plan your deployment:

- [Simple Sametime Deployments](#) on page 12
- [Multiple Sametime Community Hubs Deployments](#) on page 13

SIMPLE SAMETIME DEPLOYMENTS

Use this diagram when planning your Sametime Deployment.

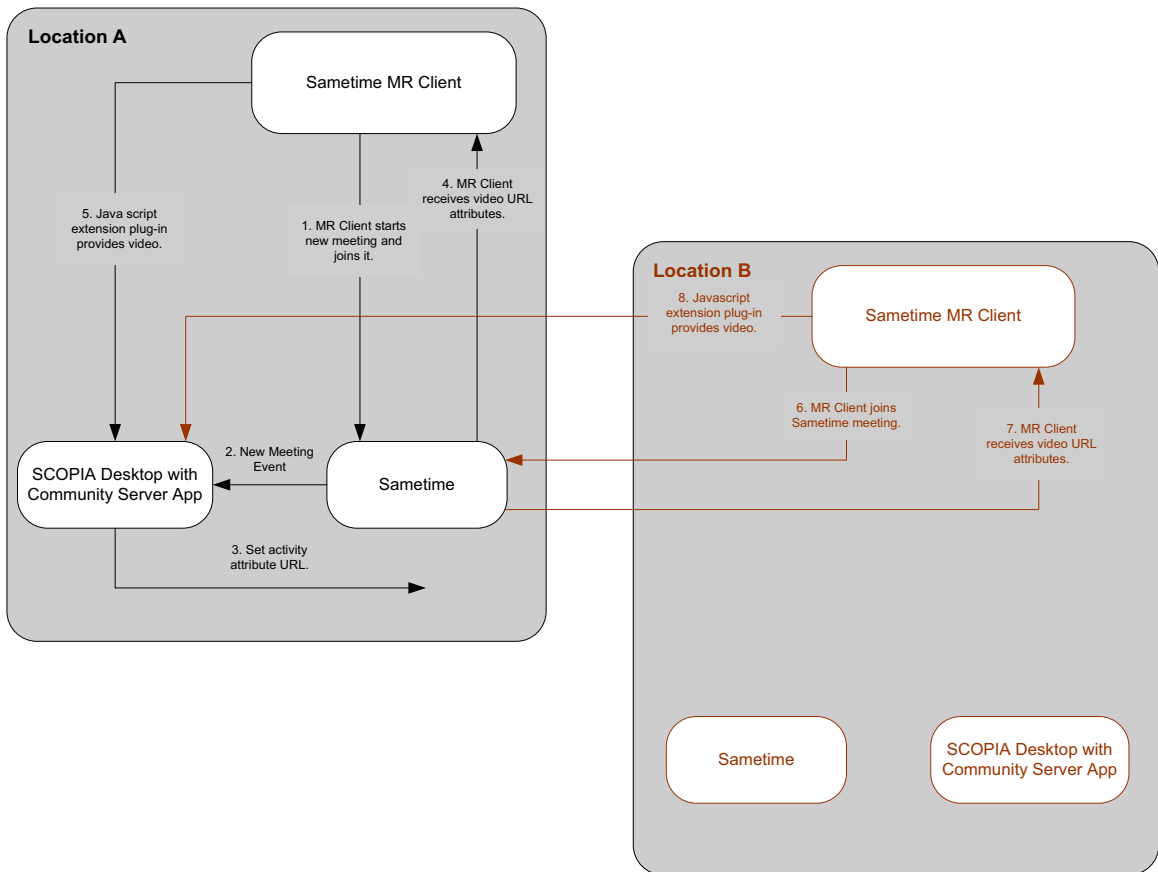
Figure 3-1 Simple Sametime Deployment



MULTIPLE SAMETIME COMMUNITY HUBS DEPLOYMENTS

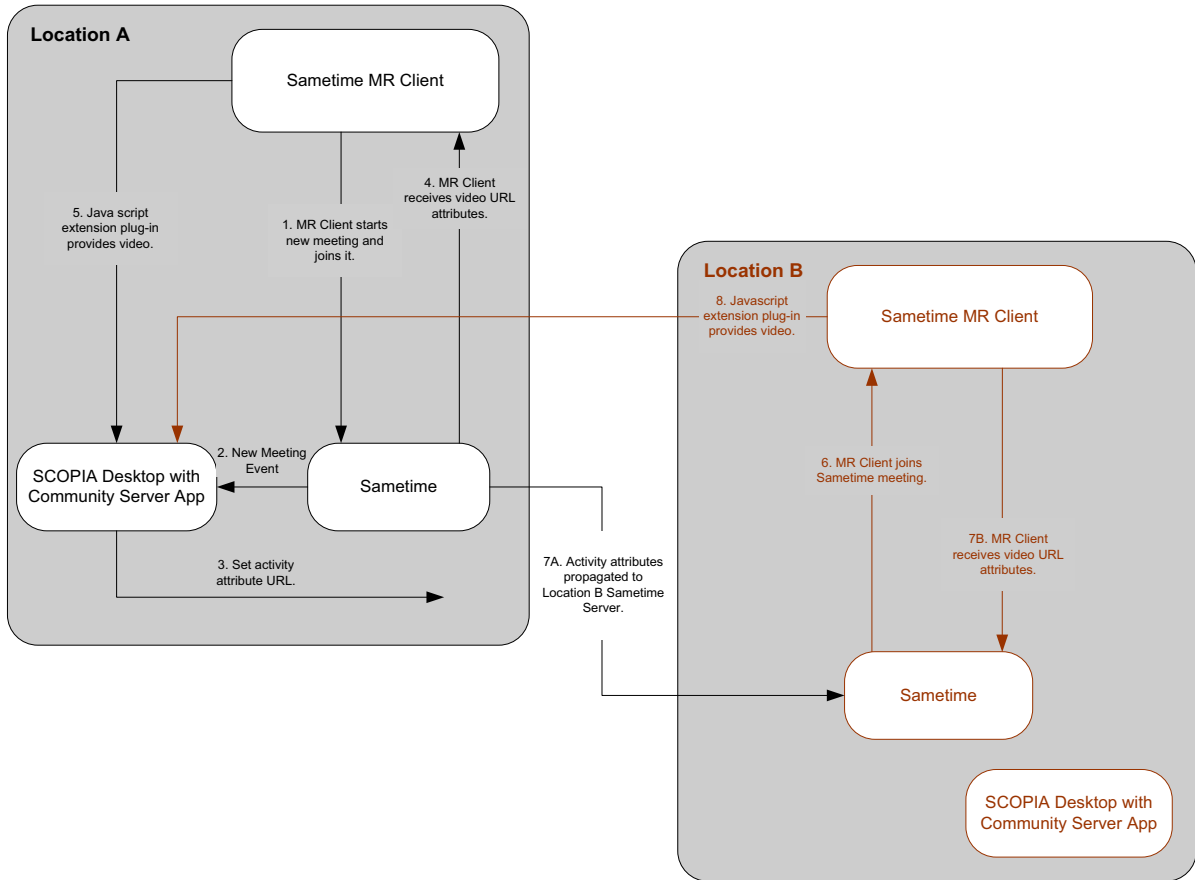
In deployments described in this section, there may be multiple community hubs. Users schedule meetings through their home Sametime Server and may invite users from the same home server as well as users from other Community Server clusters. The meetings may be hosted on the home Sametime Server of the meeting creator as shown on [Figure 3-2](#). In this case, meeting attributes do not need to be propagated to the other server.

Figure 3-2 Multiple Sametime Community Hub Deployment for non-propagated meetings



Alternatively, meetings may be hosted on different Sametime Servers. In this case, the meeting information and attributes are propagated from the home Sametime Server to the other server as shown on [Figure 3-3](#) on page 14.

Figure 3-3 Multiple Sametime Community Hub Deployment for propagated meetings



INSTALLING THE SAMETIME CONNECTOR ON THE SCOPIA DESKTOP SERVER



Procedure

- 1 On the SCOPIA Desktop Server, navigate to this location:
>*InstallDir*>*SCOPIA Desktop\SametimeWeb*.
 - 2 Double-click the *enable_sametime.vbs* file.
 - 3 Select **OK** in the confirmation message.
When the installation is completed, a message is displayed explaining that the Sametime Connector is installed and the log file is created.
-

HOW TO PREPARE THE SAMETIME SERVERS

- [Enabling Community Services Connectivity](#) on page 15
- [Installing the Meeting Room Client Javascript Extension](#) on page 16

ENABLING COMMUNITY SERVICES CONNECTIVITY

To prepare the Sametime server for the SCOPIA Connector for IBM Lotus Sametime Web Conferencing, you must edit the Sametime configuration: open the IBM Domino Administrator Application and change the IP address configuration of the SCOPIA Desktop Server to allow connection to Community Services. Perform this procedure on every Sametime server that has a SCOPIA Desktop Server associated with it.



Procedure

- 1 Open the IBM Domino Administrator application.
- 2 Select the **Domain** tab.
- 3 Select the **Files** tab.
- 4 Navigate to this location: *\Program Files\IBM\Lotus\Domino\Data*.
- 5 Double-click the Sametime Configuration file.
- 6 Select **By Form** in the left pane.

- 7 Right-click the **CommunityConnectivity**, and then select **Edit**.
The form opens.
 - 8 Enter the IP address of the SCOPIA Desktop Server in the Community Trusted IPS field.
 - 9 Select **File > Save**.
-

INSTALLING THE MEETING ROOM CLIENT JAVASCRIPT EXTENSION



To enable the video integration, you need to copy a file to the Sametime server. This file was placed on the SCOPIA Desktop Server during the SCOPIA Connector installation.

Procedure

- 1 On the SCOPIA Desktop Server, navigate to this location:
Program Files\Radvision\SCOPIA Desktop\SametimeWeb
 - 2 Copy the *SDMrcExtension.js* file.
 - 3 On the Sametime server, create this location:
\Program Files\IBM\Lotus\Domino\data\domino\html\sametime\jsex
 - 4 Paste the copied file into this location.
-

CONFIGURING THE SAMETIME SETTINGS ON THE SCOPIA DESKTOP SERVER

You need to configure the SCOPIA Desktop Server to work with the Sametime Server.

By default, the SCOPIA Desktop Server generates meeting IDs for IBM Lotus Sametime Web Conferencing meetings dynamically. The SCOPIA Desktop Server uses a service number configured in SCOPIA MCU as a meeting prefix, adding a randomly generated four-digit number to it to create a meeting ID. In deployments using iVIEW Suite, you can configure the SCOPIA Desktop Server to use a predefined virtual room.

Before You Begin

- Access the SCOPIA Desktop Administration web user interface.
- Verify the Sametime Server address.

- Verify which port on the Sametime Server you need to assign to the SCOPIA Desktop Server.
- If you want to set the meeting prefix, access the iVIEW Suite Administration web pages, navigate to **Network Tree** > required MCU > **Services**, and verify what services are available.



Procedure

- 1 Select **Sametime** in the sidebar.
- 2 Enter the Sametime Server address.
- 3 Enter the port on the Sametime Server.
The default port is 1516.
- 4 For deployments using SCOPIA MCU, select **Generate meeting IDs dynamically, using the specified meeting prefix**, and then enter the meeting prefix. The meeting ID generated by SCOPIA Desktop Server will be based on the meeting prefix you define.
-or-
- 5 For deployments using iVIEW Suite, select **Use the meeting creator's virtual room**. The virtual room configured for this user on iVIEW Suite will be used.
- 6 Enter the meeting prefix for the SCOPIA Desktop Server to use for the Sametime meetings.
- 7 If necessary, set the number of video panes displayed in the Conference Client pane when it is opened in the Sametime Meeting Room window:
 - a Select **Set the initial view that users will see when they join a Sametime meeting**.
 - b Select one of these options:
 - ❖ **1 Video**
 - ❖ **2 Videos**
- 8 If necessary, select **Enable Audio in SCOPIA Desktop for Sametime meetings**.

- 9 If necessary, select **Allow only the Sametime Meeting Chair to add video to a meeting**. This allows a Sametime Meeting chair to control when the video pane is displayed in the user's meeting room client.

Note This feature is not available if the SCOPIA Connector is configured to work with the Sametime Server version 7.5.1.

- 10 If necessary, select **Allow only the Sametime Meeting Chair to moderate a meeting**. This determines whether audio and video moderation functions are enabled only a Sametime Meeting chair or for all participants in a SCOPIA Desktop meeting.
- 11 Select **OK** or **Apply**.
- 12 Verify that the connection to the Sametime Server is successful:
 - a Select **Status** in the sidebar.
 - b Select the link showing the IP address of the Sametime Server to display the settings.

The indicator next to the link shows whether or not the connection to the Sametime server is successful. When the indicator is red, a tooltip containing error details is available. Select the red indicator to view further error information.



www.radvision.com

About RADVISION

RADVISION (NASDAQ: RVSN) is the industry's leading provider of market-proven products and technologies for unified visual communications over IP and 3G networks. With its complete set of standards based video networking infrastructure and developer toolkits for voice, video, data and wireless communications, RADVISION is driving the unified communications evolution by combining the power of video, voice, data and wireless – for high definition video conferencing systems, innovative converged mobile services, and highly scalable video-enabled desktop platforms on IP, 3G and emerging next generation networks. For more information about RADVISION, visit www.radvision.com

USA/Americas

T +1 201 689 6300

F +1 201 689 6301

infoUSA@radvision.com

EMEA

T +44 20 3178 8685

F +44 20 3178 5717

infoUK@radvision.com

APAC

T +852 3472 4388

F +852 2801 4071

infoAPAC@radvision.com

