

# SCOPIA Elite MCU 5000 Series

## Telepresence Interoperability



RADVISION's SCOPIA Elite MCU with Telepresence Interoperability is the most interoperable, multi-vendor, multi-stream telepresence conferencing solution available, enabling multi-party communications between different vendor's telepresence systems in addition to standards-based video conferencing endpoints. This new capability of the SCOPIA Elite MCU allows enterprises and service providers to cost effectively deliver all multipoint communications capabilities in a single platform supporting mobile video devices to high-end telepresence systems.



Connect to Standards-Based Video Conferencing Systems

### Telepresence Interoperability Highlights

**Multi-Vendor Telepresence System Interoperability** – Cisco<sup>®</sup> CTS TelePresence<sup>™</sup>, LifeSize<sup>®</sup> Conference<sup>™</sup>, Polycom<sup>®</sup> RPX<sup>™</sup> and TPX<sup>™</sup>, and Tandberg<sup>®</sup> T Telepresence series systems

**Video Conferencing System Interoperability** – connect to any standards-based video conferencing system including room systems, desktops, mobile devices and unified communications clients such as Alcatel-Lucent<sup>®</sup> My Teamwork, IBM<sup>®</sup> Lotus<sup>®</sup> Sametime<sup>®</sup> and Microsoft<sup>®</sup> Office<sup>®</sup> Communicator

**Optimized Video Layouts for Telepresence Systems** – users view other conference participants in a special video layout, adding to the telepresence immersive experience

**Unique Panoramic Layouts for Traditional Video Conferencing Systems** – telepresence participants are seen in a unique video layout where multiple video streams from a telepresence system are combined into a panoramic image

**Conference Moderation with the Apple<sup>®</sup> iPad<sup>™</sup>, iPhone<sup>®</sup> and iPod touch<sup>®</sup>** – moderate and manage telepresence conferences with highly intuitive Multi-Touch<sup>™</sup> control

## Specifications

(see SCOPIA Elite MCU datasheet for more details)

### Capacity

- SCOPIA Elite 5110: up to 10 telepresence segments
- SCOPIA Elite 5115: up to 15 telepresence segments
- SCOPIA Elite 5230: up to 30 telepresence segments
- Any mix of segments supported up to the capacity

### Signaling Protocols

- H.323, SIP, H.320<sup>1</sup>, H.324M<sup>2</sup>
- IPV4, IPV6

### Audio Support

- Codecs – G.711, G.722, G.722.1, G.729, MPEG4 AAC, Polycom<sup>®</sup> Siren14<sup>TM</sup>/G.722.1 Annex C

### Video Support

- HD Continuous Presence up to 1080p 30fps, 720p 60fps
- Codecs – H.261, H.263, H.263+, H.264, H.264 SVC
- Live video resolutions – QCIF up to 1080p
- Presentation video resolution – up to WUXGA
- Video bandwidth – up to 12Mbps

### Telepresence Connectivity

- Cisco<sup>®</sup> CTS TelePresence<sup>TM3</sup>
- LifeSize<sup>®</sup> Conference<sup>TM</sup>
- Polycom<sup>®</sup> RPX<sup>TM</sup> and TPX<sup>TM</sup>
- Tandberg<sup>®</sup> T1 and T3 Telepresence
- Combine telepresence, HD and SD systems in the same conference

### Advanced Telepresence Video Processing

- Immersive telepresence system layouts optimized for telepresence users to view other conference participants
- Panoramic layouts for traditional video conferencing systems combining multiple video streams from a telepresence system

### On-screen Interactive Control and Information Overlay

- Easy-to-use video moderator menu
- Text overlay (eg. conference participant's name)
- Presenter identification
- User joined / left meeting
- Audio / video muted / un-muted
- Number of audio only participants
- Audio only active speaker name
- Encrypted meeting
- Meeting being recorded

### Data Collaboration and Presentation Sharing

- H.239 and DuoVideo for presentation sharing

### Conference Control with the Apple<sup>®</sup> iPad<sup>TM</sup>, iPhone<sup>®</sup> and iPod touch<sup>®4</sup>

- Multi-Touch<sup>TM</sup> moderation and management of conferences

### Web-Based Monitoring and Control

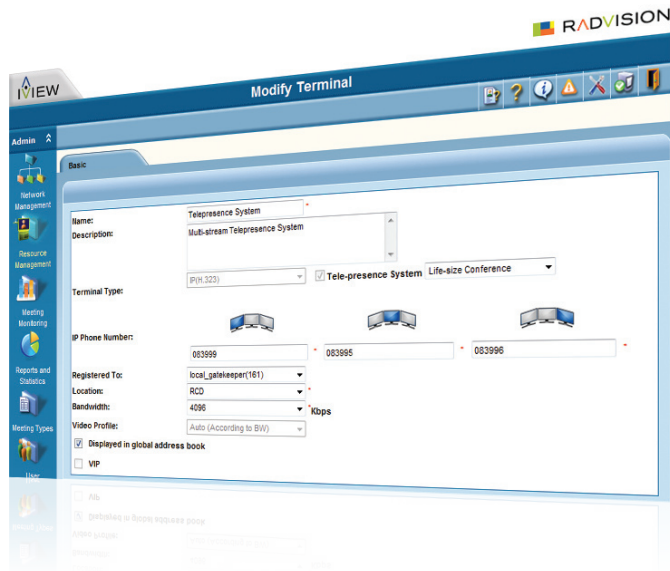
- User-friendly web interface for configuration and operation

1. In conjunction with SCOPIA H.320 Gateways
2. In conjunction with SCOPIA 3G Gateways
3. Currently limited to one video stream
4. Future availability



SCOPIA Elite MCU 5000 Series

RADVISION's SCOPIA Elite MCU is the ideal platform to support telepresence given the special handling and video processing required for telepresence communications. The SCOPIA Elite utilizes the latest in high performance DSP technology and offers 1080p video capabilities yielding uncompromised high definition multi-party support. Telepresence capabilities on the SCOPIA Elite MCU are enabled through a license key providing the ability for enterprises to migrate to telepresence in a very cost effective fashion as opposed to purchasing an additional, expensive separate system.



iVIEW SCOPIA Management Suite Provides Simple Telepresence Configuration

## About RADVISION

RADVISION (NASDAQ: RVSN) is the industry's leading provider of market-proven products and technologies for unified visual communications over IP and 3G networks. With its complete set of standards-based video communications solutions and developer toolkits for voice, video, data and wireless communications, RADVISION is driving the unified communications evolution by combining the power of video, voice, data and wireless – for high definition video conferencing systems, innovative converged mobile services, and highly scalable video-enabled desktop platforms on IP, 3G and emerging next-generation networks. For more information about RADVISION, visit [www.radvision.com](http://www.radvision.com)

USA/Americas  
T +1 201 689 6300  
F +1 201 689 6301  
[infoUSA@radvision.com](mailto:infoUSA@radvision.com)

EMEA  
T +44 20 3178 8685  
F +44 20 3178 5717  
[infoUK@radvision.com](mailto:infoUK@radvision.com)

APAC  
T +852 3472 4388  
F +852 2801 4071  
[infoAPAC@radvision.com](mailto:infoAPAC@radvision.com)